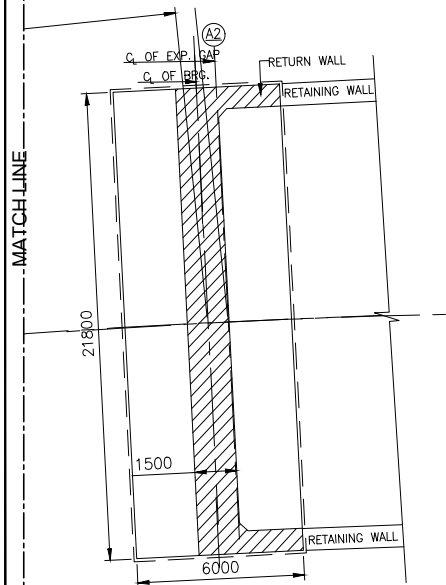


LONGITUDINAL ELEVATION
(SCALE 1:200)




PLAN
(SCALE 1:200)

LEGEND:		
00 SEPT. 2021		INITIAL SUBMISSION
REV	DATE	DESCRIPTION

PROJECT:-	
Construction of two lane with paved shoulder of Kohima-Bypass Road connecting NH-39(New NH-02), NH-150(New NH-02),NH-61(New NH-29) and NH-39(New NH-02) from Design Km 21.00 to design KM 32.00Design Length-11.00 Km in the state of Nagaland Under SARDP-NE on EPC Mode(Package III)	

CLIENT :	
	
GOVERNMENT OF INDIA MINISTRY OF ROAD TRANSPORT & HIGHWAYS (MoRT&H) NATIONAL HIGHWAY & INFRASTRUCTURE DEVELOPMENT CORPORATION LIMITED (NHIDCL)	

AUTHORITY ENGINEER	
	
JV PIONEER INFRA CONSULTANTS PVT LTD In association with DESIGN LINE CONSULTANCY SERVICES	

JOB No. : DD/PI/13		TITLE :	
DESIGNED	B.J.	GENERAL ARRANGEMENT DRAWING FOR VIADUCT AT KM 23+475	
DRAWN	A.G.		
CHECKED	A.K.		
APPROVED	S.P.		
DATE	SEPT. 2021	DRAWING NO: NHIDCL/FG/PI/VD/IGAD/23+475/002	
		Scale: As Noted	Sheet: (02 OF 03)
		REV: 00	
		SIZE: A3	